

PITT MEADOWS REGIONAL AIRPORT

Pitt Meadows Regional Airport
City of Maple Ridge
Airport Update
03.29.22





PITT MEADOWS
REGIONAL AIRPORT
Current Development





PITT MEADOWS
REGIONAL AIRPORT





PITT MEADOWS
REGIONAL AIRPORT





PITT MEADOWS
REGIONAL AIRPORT





PITT MEADOWS

REGIONAL AIRPORT

FBO / JRG / PMAS / Turbo Lift / Harbor Air / Flight Schools





PITT MEADOWS
REGIONAL AIRPORT

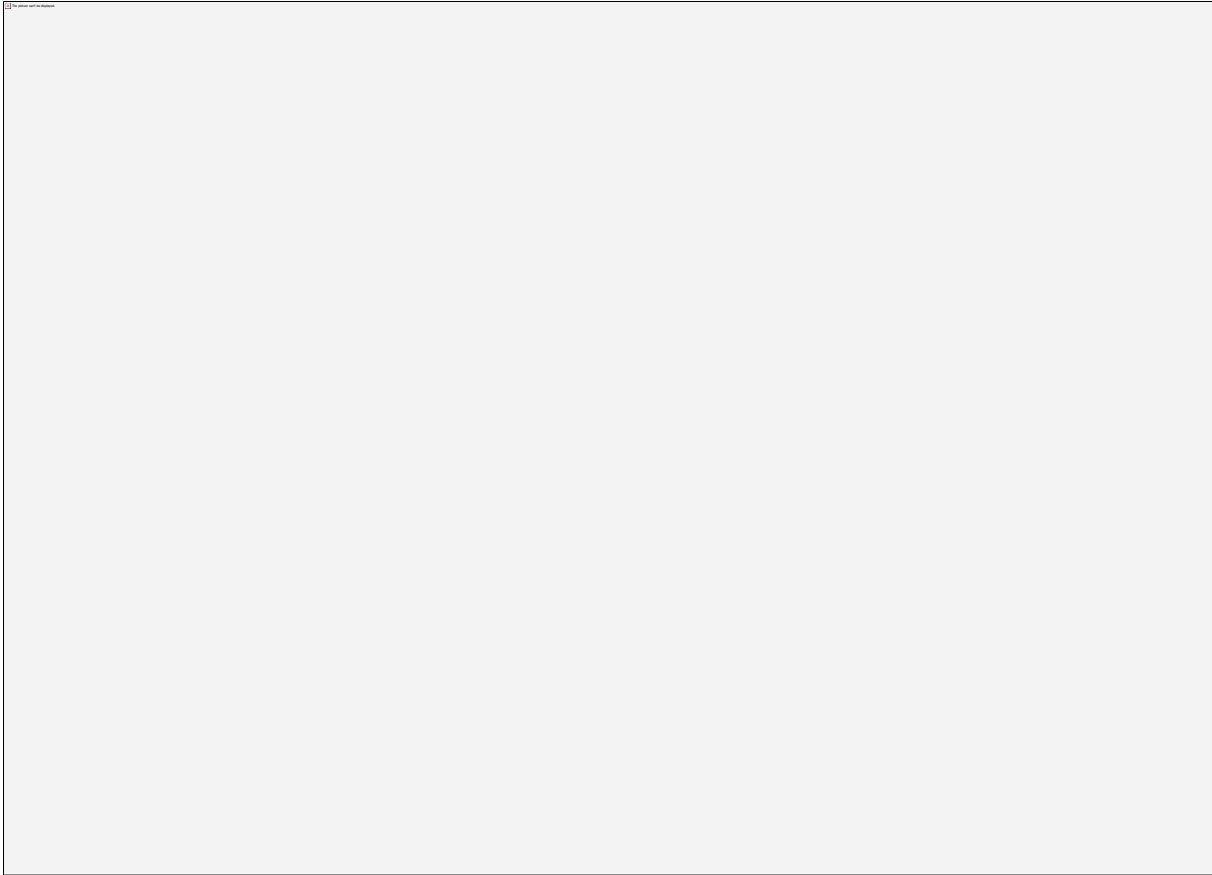


PITT MEADOWS
REGIONAL AIRPORT



PITT MEADOWS
REGIONAL AIRPORT





PITT MEADOWS
REGIONAL AIRPORT

PMAS Office / Open Walk-ins: Monday - Wednesday 1300 to 1630.





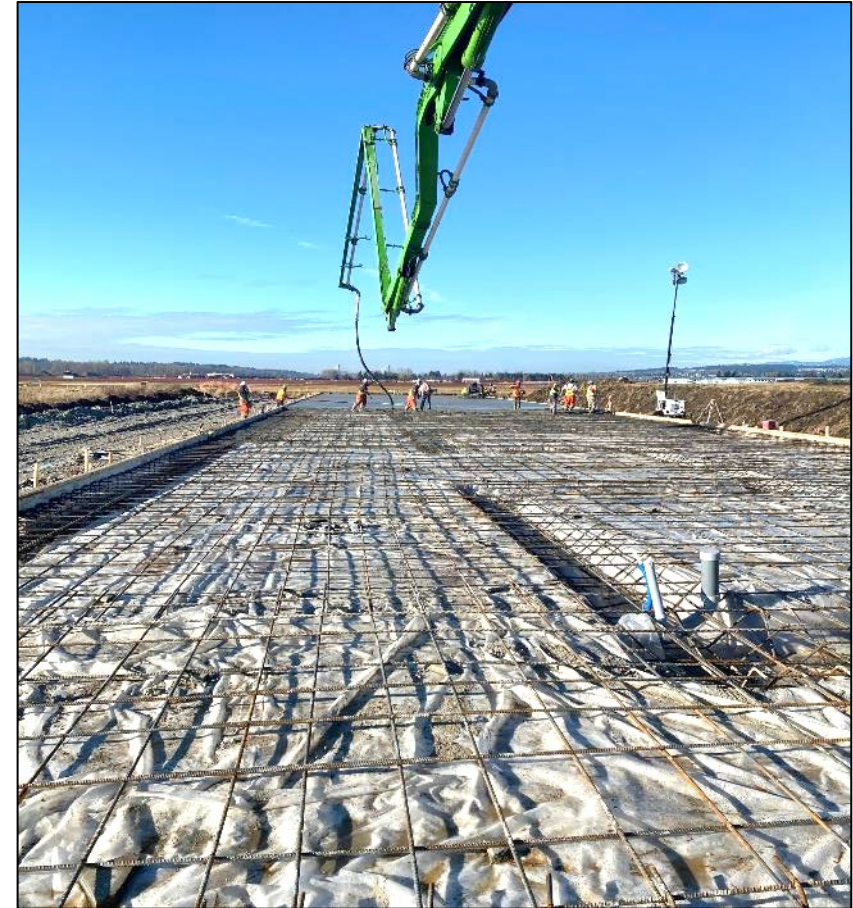
PITT MEADOWS
REGIONAL AIRPORT
Current Development





PITT MEADOWS
REGIONAL AIRPORT





PITT MEADOWS
REGIONAL AIRPORT





PITT MEADOWS
REGIONAL AIRPORT



PITT MEADOWS
REGIONAL AIRPORT





PITT MEADOWS
REGIONAL AIRPORT
Current Development





PITT MEADOWS
REGIONAL AIRPORT





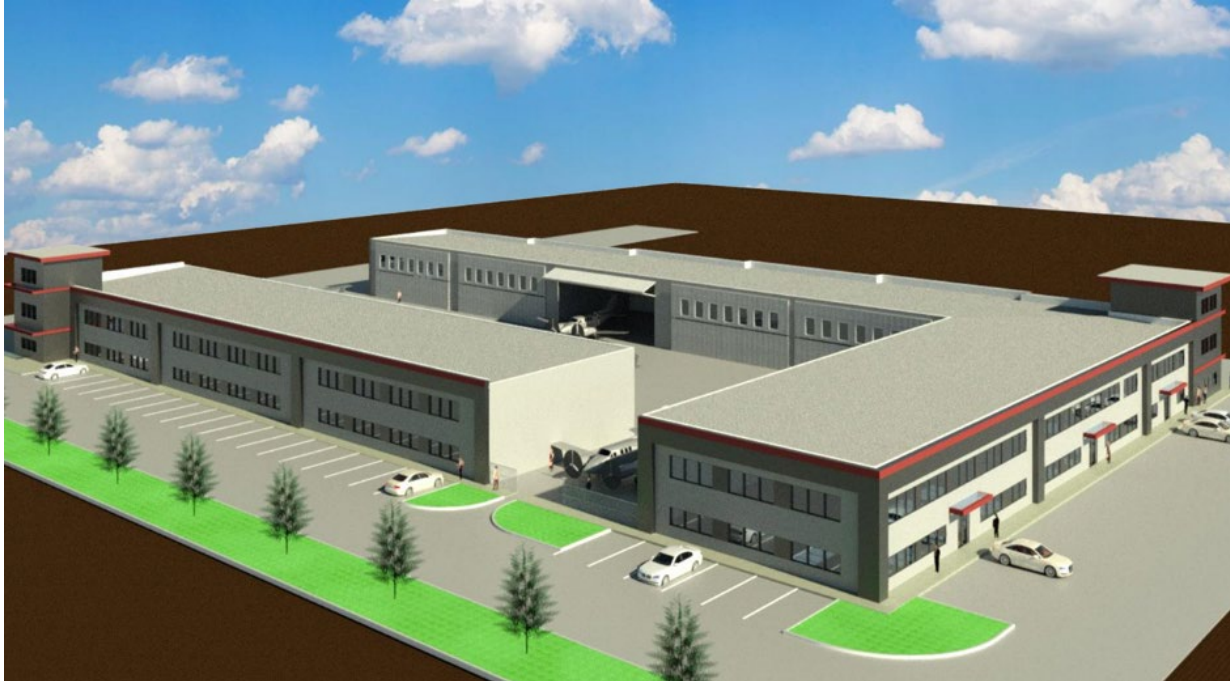
PITT MEADOWS
REGIONAL AIRPORT



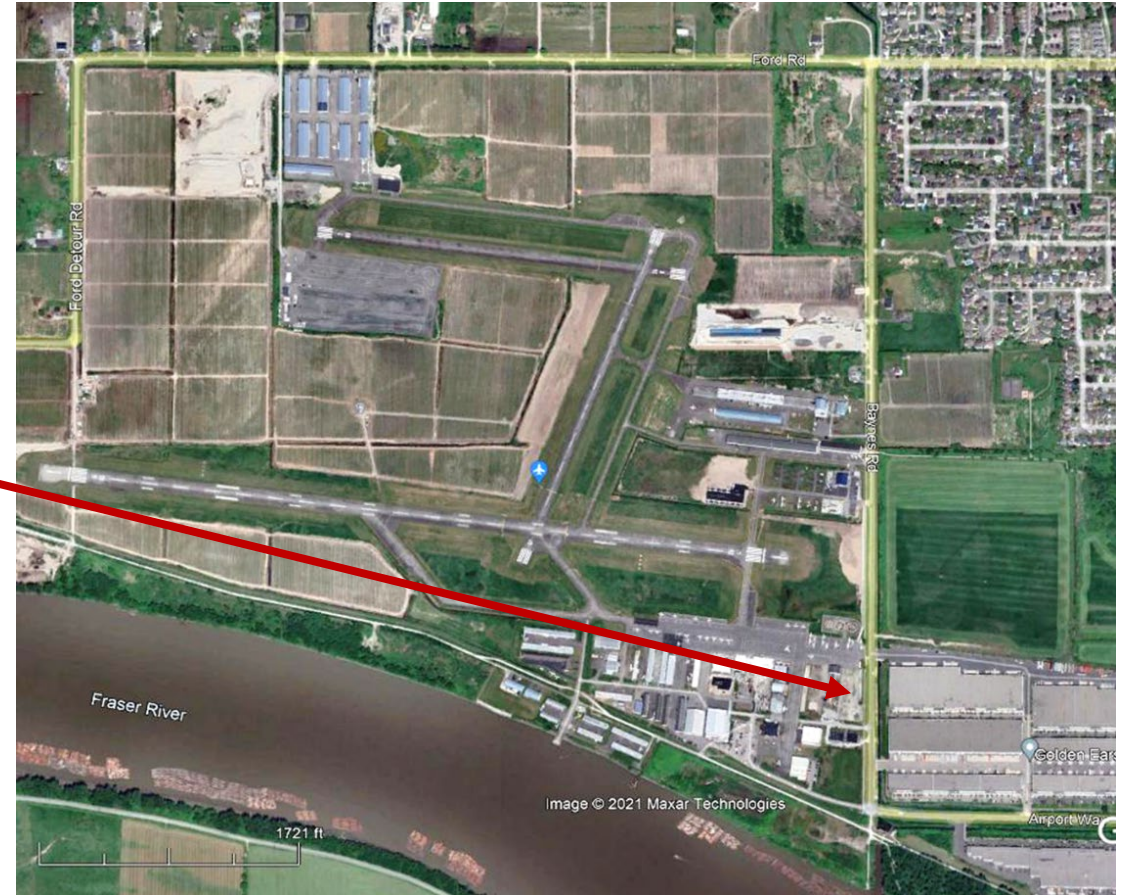


PITT MEADOWS
REGIONAL AIRPORT





Golden Arrow



PITT MEADOWS
REGIONAL AIRPORT
Planned Starts 2022





Sky Helicopters

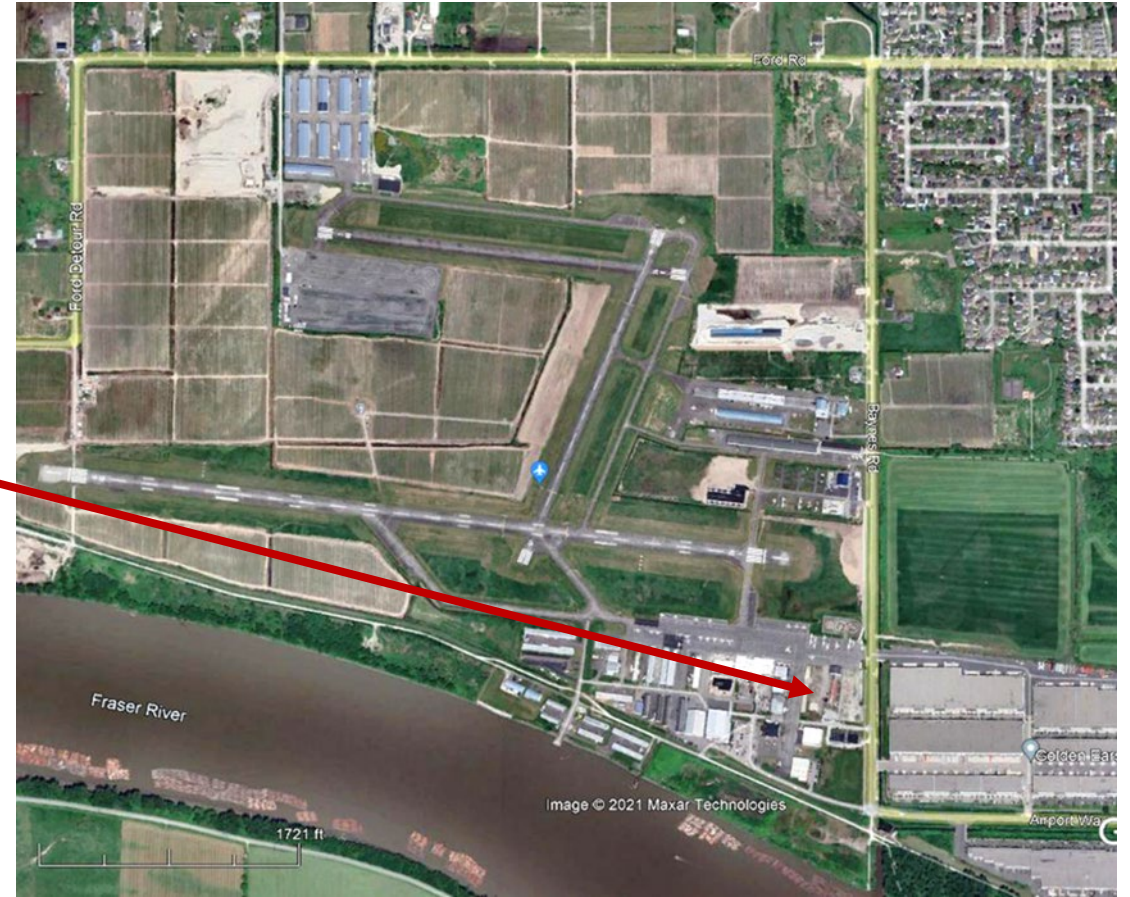


PITT MEADOWS
REGIONAL AIRPORT



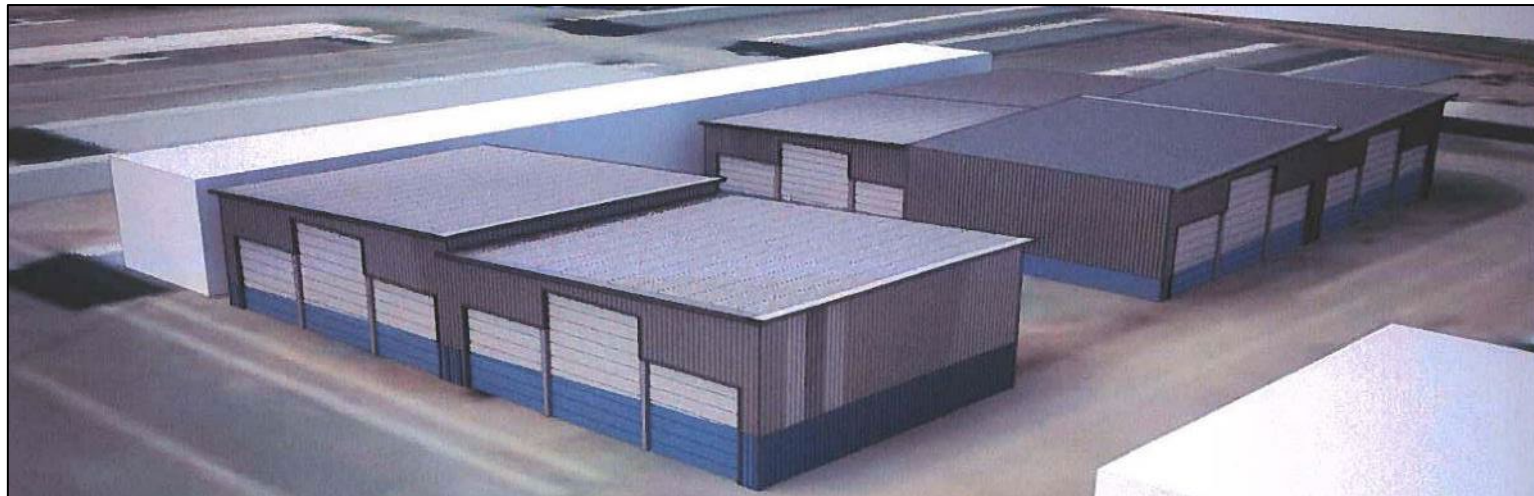
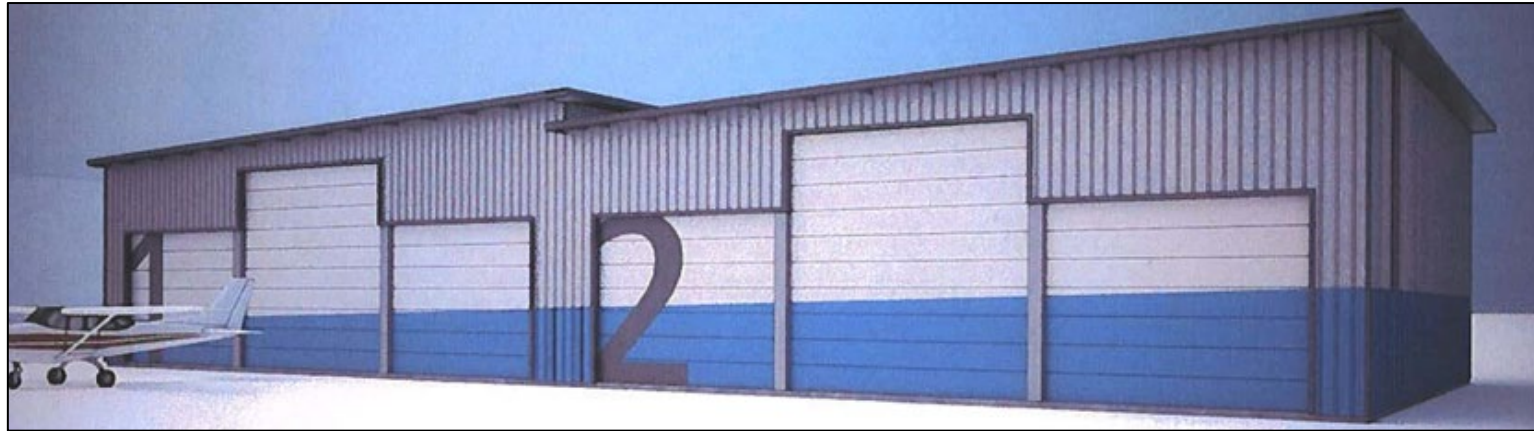


Pacific Aircraft Services



PITT MEADOWS
REGIONAL AIRPORT





Rowen Industries

PITT MEADOWS
REGIONAL AIRPORT





Sierra Helicopters

PITT MEADOWS
REGIONAL AIRPORT



- What are we thinking about ?
- Very early conceptual stage.
- Investigative stage.
- No projects approved.

1 - Airport Commercial Hangars

2 – Airport Airpark or Commercial Hangars

3 - Airport Commercial Hangars / Support Services Imbedded

4 – Waterfront Development

5 – Airport Waterfront Floatplane Hangars



PITT MEADOWS
REGIONAL AIRPORT
High Level Future Conceptual





Airport
Development

- Boardwalk Style
- Boutique Retail & Eateries
- Seaplane Terminal & Restaurant
- Small Pleasure Craft Marina
- Floatplane Docking Area
- Bonson Landing / Osprey Village Concept
- Community Friendly & Focused
- Bringing Airport to the Community
- Bringing Community to the Airport

© 2018 Google

Google Earth

PITT MEADOWS
REGIONAL AIRPORT



- New PMAS Board / Intro.Workshop
- Grand Opening Terminal Building
- Branding / PR Initiative
- Airport Endowment Fund
- 2022 Capital Projects
- Paving / Airport Beautification
- Overflow Parking Lot
- Main Entrance - Aircraft Static
- Main Entrance - Airport Way
- Main Entrance - Parking Lot
- Airport Greenspace
- Storage Compound

2022 PMAS Board:

Mark Roberts / CAO - City of Pitt Meadows
Andrew Westlund
Patricia Gordon

Scott Hartman / CAO - City of Maple Ridge
Dave Harkness
Cyrus Ameli





Pitt Meadows Airport Society & Pacific Aircraft Services

Welcome you to join our teams in the Grand Opening of the new terminal facility.
The evening will include food, drinks and entertainment.

Business Professional or Cocktail Attire Welcome

The Evening's Events

6:30pm

Doors Open

7:00pm

MC Welcoming & Opening Celebration

Ribbon Cutting Ceremony

7:30pm

Social Hour with Drinks & Appetizers
(site tours encouraged)

8:30pm

Municipal & Provincial Speeches

9-10pm

Social & Departing Hour

Please RSVP to azannet@flyypl.ca before April 30, 2022



Group of Companies

PITT MEADOWS
REGIONAL AIRPORT



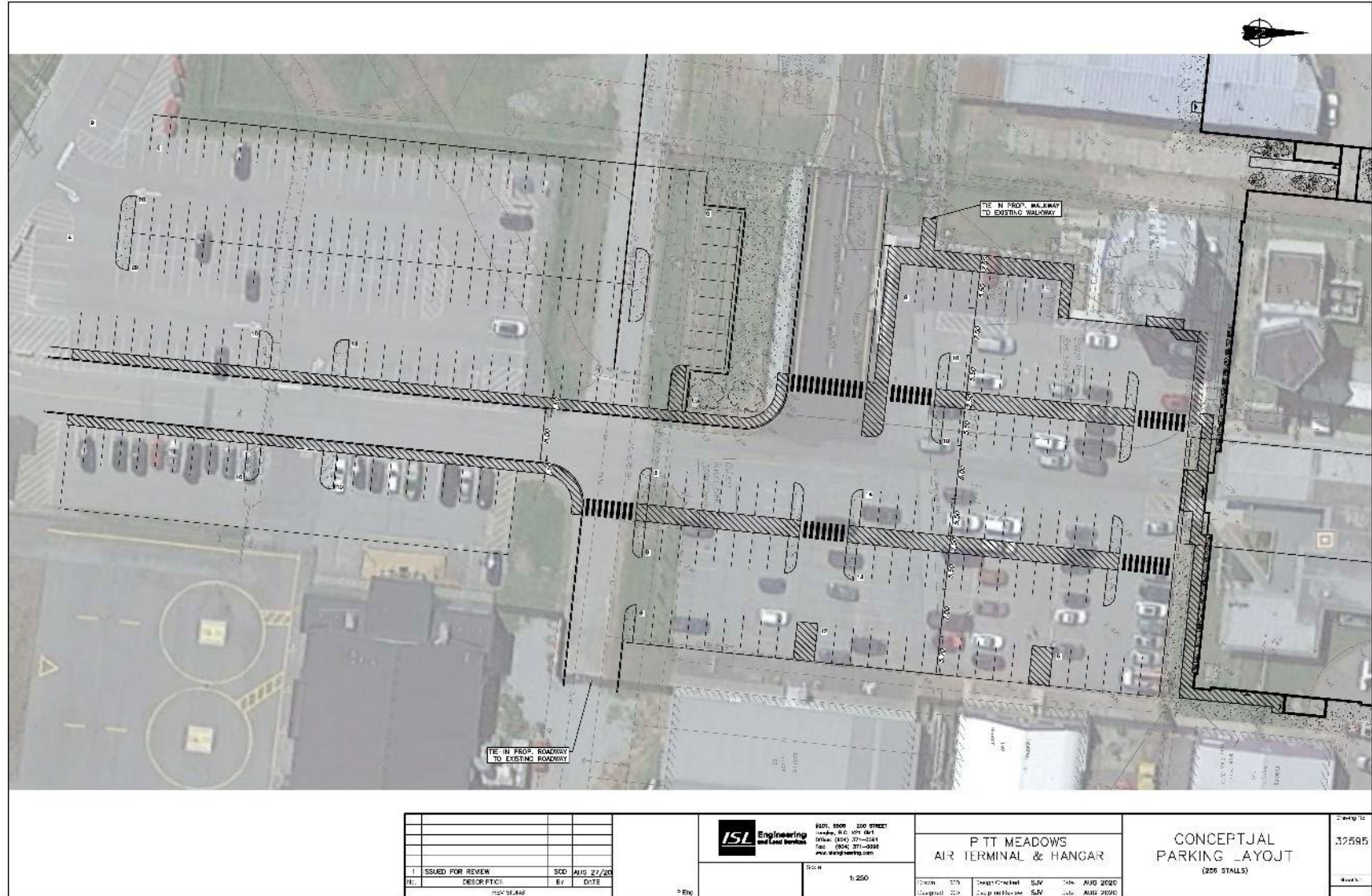
- New PMAS Board / Intro.Workshop
- Grand Opening Terminal Building
- Branding / PR Initiative
- Airport Endowment Fund
- 2022 Capital Projects
- Paving / Airport Beautification
- Overflow Parking Lot
- Main Entrance - Aircraft Static
- Main Entrance - Airport Way
- Main Entrance - Parking Lot
- Airport Greenspace
- Storage Compound



PITT MEADOWS
REGIONAL AIRPORT
Airport General



PITT MEADOWS
REGIONAL AIRPORT



ISSUED FOR REVIEW	SOD	DATE	
	BY	DATE	

ISL Engineering and Land Services
 6871, 8008 200 STREET
 Langley, B.C. V3V 2K1
 Phone: (604) 371-5241
 Fax: (604) 371-0395
 www.isl-engineering.com

**PITT MEADOWS
AIR TERMINAL & HANGAR**

Scale: 1:250

Checked: []
 Drawn: []
 Design Checked: []
 Design: []

**CONCEPTUAL
PARKING LAYOUT
(200 STALLS)**

DATE: AUG 2020

Sheet No.	37595



PITT MEADOWS
REGIONAL AIRPORT

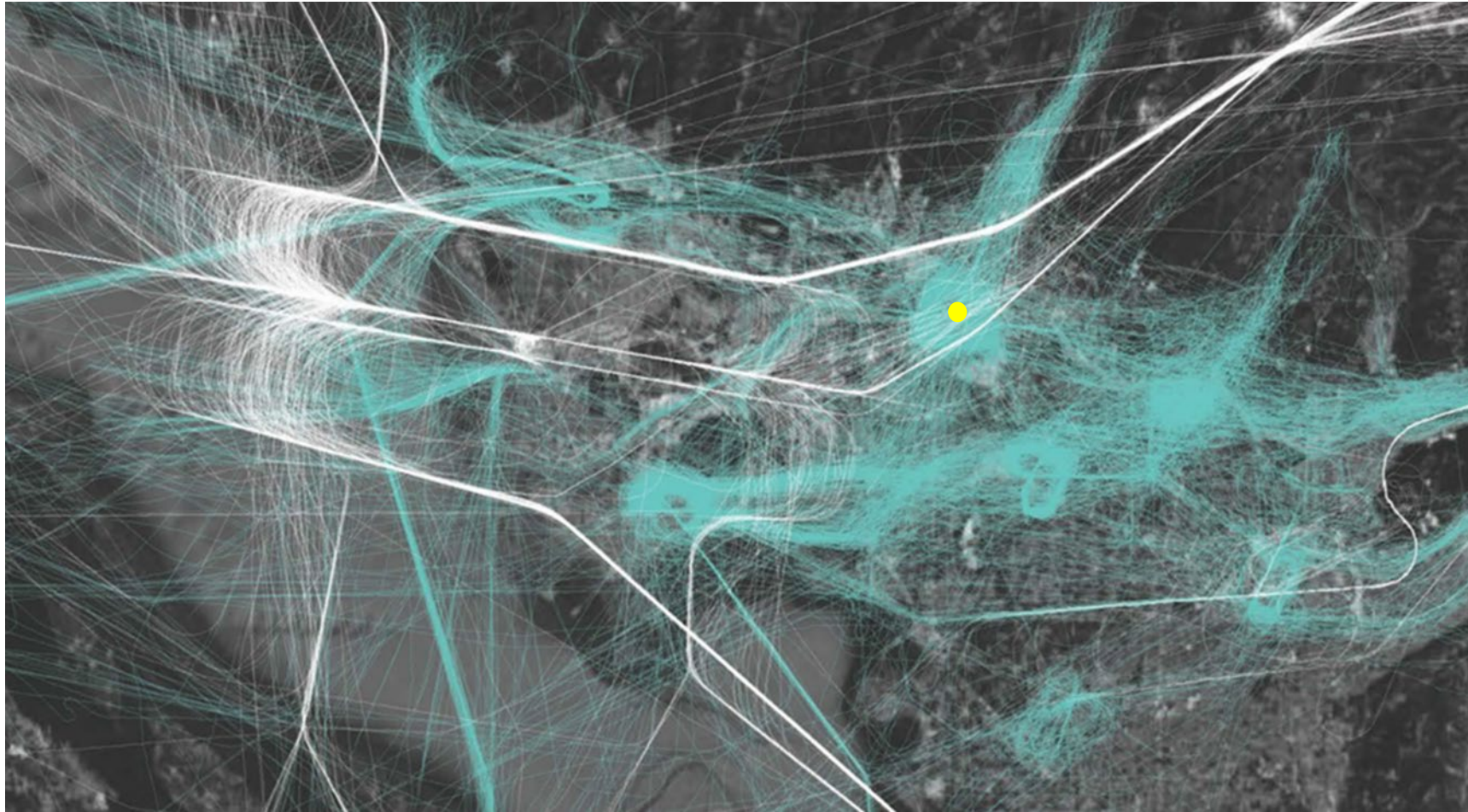




PITT MEADOWS
REGIONAL AIRPORT

DEVELOPMENT PROPOSAL

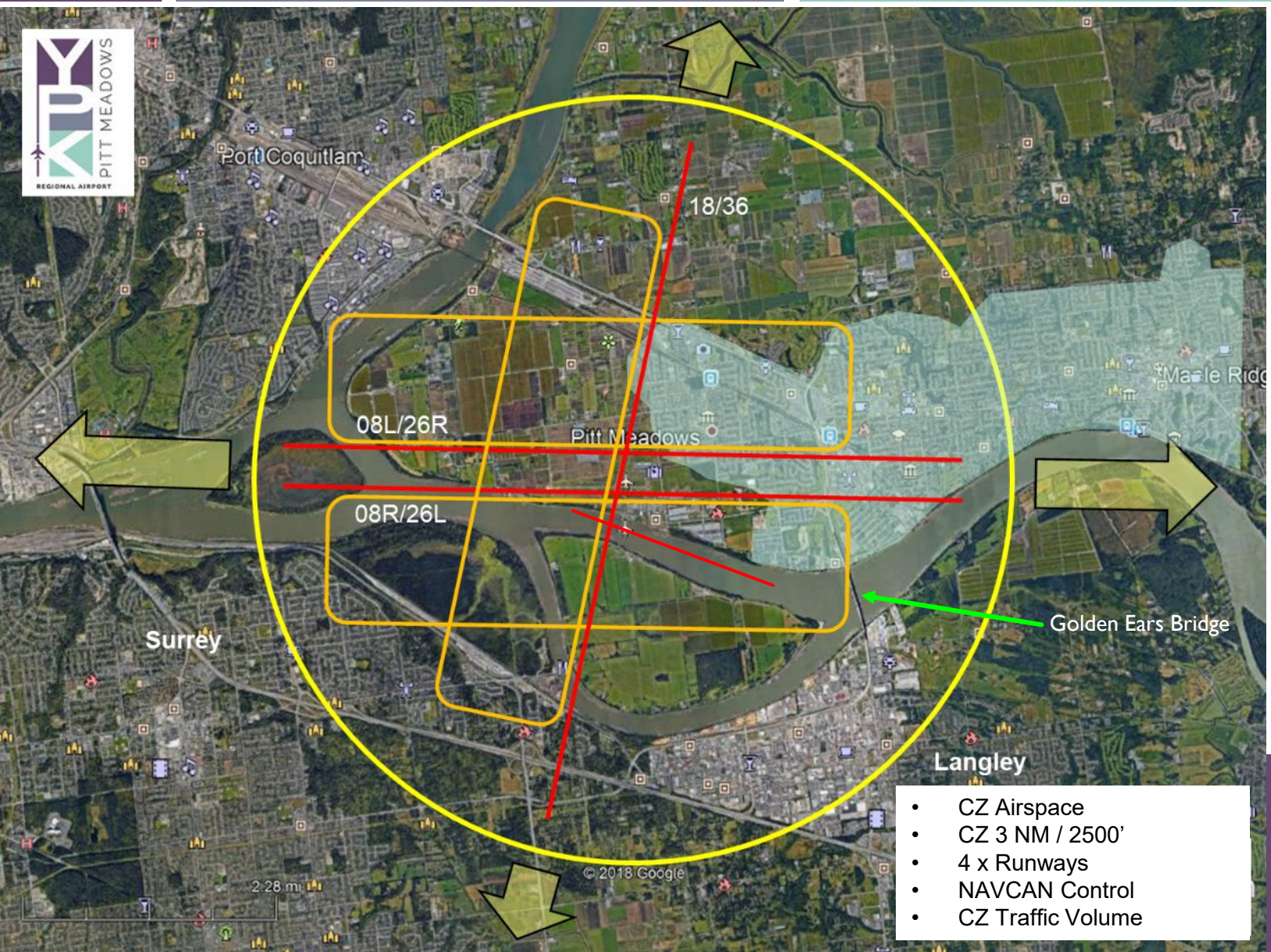




PITT MEADOWS
REGIONAL AIRPORT
Airport Airspace

Airspace - Traffic Volume
Day of flight traffic from July 2019 over the Lower Mainland region.
Information provided by NAVCAN

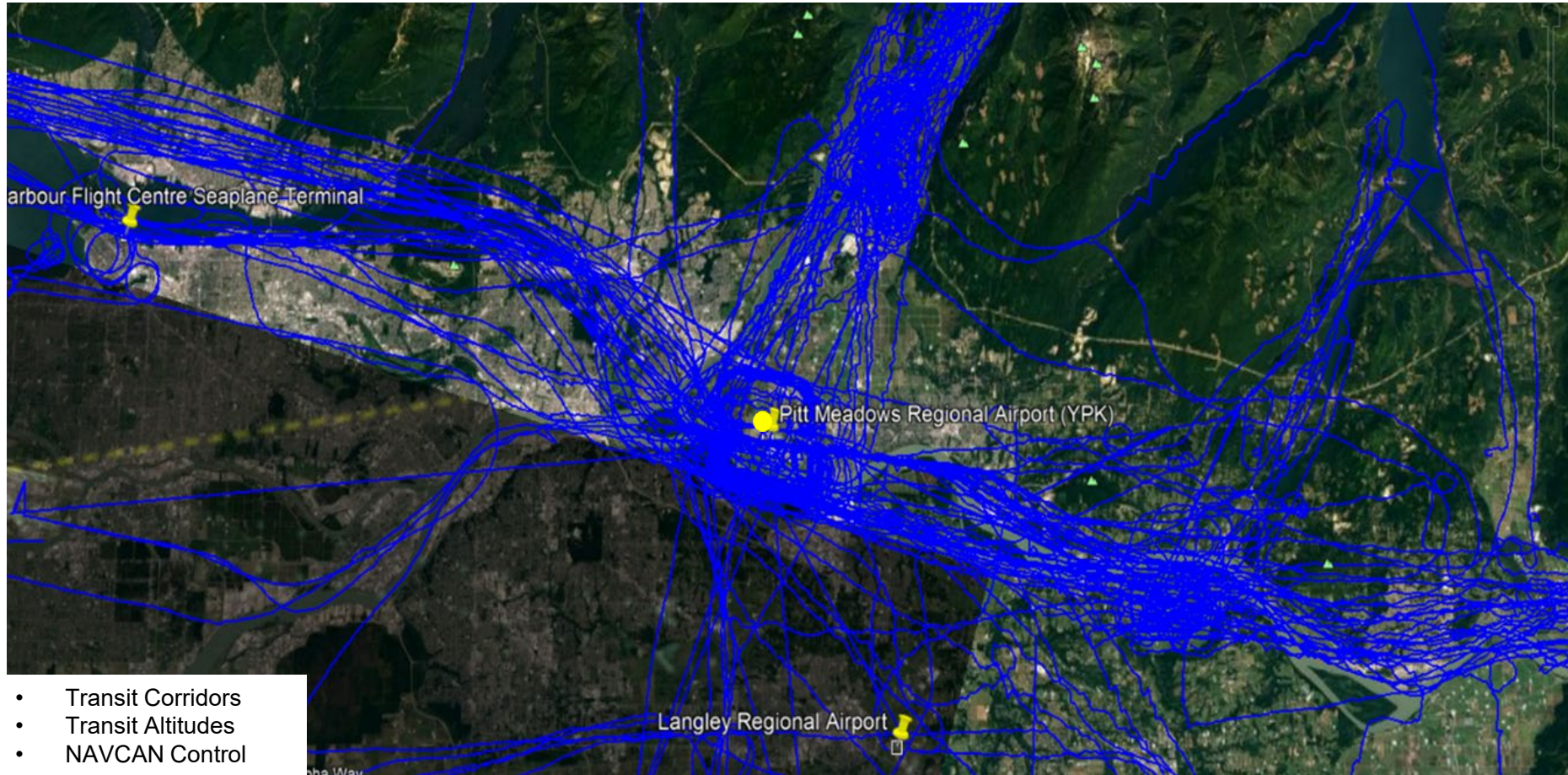




PITT MEADOWS
REGIONAL AIRPORT
Airport Airspace

- CZ Airspace
- CZ 3 NM / 2500'
- 4 x Runways
- NAVCAN Control
- CZ Traffic Volume





PITT MEADOWS
REGIONAL AIRPORT
Airport Airspace

Day of flight traffic from July 2019 specific to YPK
Information provided by NAVCAN



Airspace Oversight and Management Structure, Regulations, Compliance, Enforcement

- TC – CDN Air Regulations
- NAVCAN – Operational Directives, ATC Procedures, Real Time Aircraft Command and Control
- Airport – CFS Procedures / Restrictions
- Tenants / Pilots - Best Flying Practices (Airport Culture)
- Public Noise Concerns / Reporting
 - Airport Meetings
 - Airport Website: flypk.ca (Noise Reports)
 - Airport Email: info@flypk.ca
 - Airport Phone: [604.465.8977](tel:604.465.8977)
 - PM / MR City Halls
 - Transport Canada
 - Hotline: [1-800-305-2059](tel:1-800-305-2059)
 - TC Email: services@tc.gc.ca
 - Airport Response / Investigate – Evaluate - Respond



PITT MEADOWS REGIONAL AIRPORT

Pitt Meadows Regional Airport
Airport Overview
Chamber of Commerce Brief
02.03.22

